

Malparidos Exhaust

Installation

1. Remove your exhaust system and if installed O2 sensors.

2. Exhaust gaskets:

Remove exhaust gaskets and insert new exhaust gaskets (not supplied). Make sure that the thin end goes over the exhaust pipe.

3. Exhaust bracket:

Remove 3 bolts from the gear bearing housing. Do not keep the 3 bolts removed for a long time and make sure it does not leak oil. If so, gasket must be replaced.

Mount the exhaust bracket with new bolts with washers supplied in the Malparidos option bag and tighten to 32 Nm.



4. O2 sensors/adapters:

If sensor is being installed, mount seal ring and coat threads on sensor & adapter with Loctite Anti-Seize.

Thread sensor into exhaust pipe (or adapter) and tighten to Big Oxygen sensor 50 Nm or Small Oxygen sensor 17 Nm)

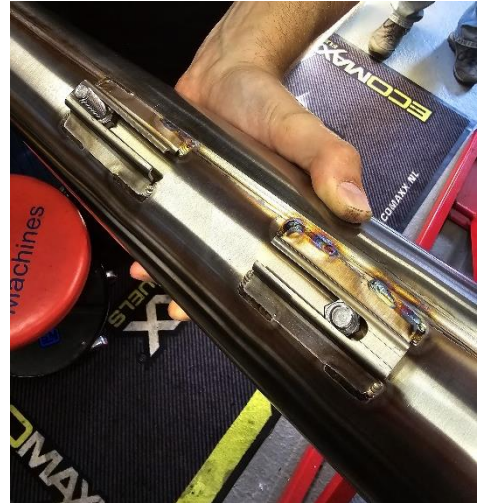


5. Exhaust mounting procedure on motorcycle:

Position ends of exhaust pipes into front and rear cylinder head exhaust ports with holes in exhaust manifold flanges over cylinder head exhaust studs. Install upper nut and tighten finger-tight.

Slide the muffler over the exhaust pipes. Align the exhaust pipes and muffler well on the bracket and that the system does not touch anything. Ensure a stress-free installation. Tighten this 3/4 but do not tighten yet.

Mount springs on exhausts pipes and muffler.



Tighten flange nuts at rear cylinder studs:

- Install lower nut. Tighten to 1-2 Nm.
- Tighten upper nut to 13,5 Nm.
- Tighten lower nut to 13,5 Nm.

Tighten 2 exhaust muffler bolts to 24 Nm.
Make sure the washers are installed.

Route O2 sensor harness to mating connector and connect.
Install cable straps that were removed during removal.

Repeat previous steps for other sensor.



6. First heat cycle:

Start your bike. Let it run on idle for 4 minutes. Let it cool down. And check the torque of the exhaust bolts, nuts and possibly heat shields. Enjoy your ride.

7. Accessories:

Db-killer:

Align Db-killer and tighten 1 bolt to 11 Nm.

Tighten endcap bolts to 11 Nm.

Heatshields:

Open the worm drive clamps. Align the heatshields so they do not touch any motorcycle parts and clamps are out of sight. Install exhaust heatshields. Tighten worm drive clamps to 4,5 Nm.